The logo for 4C CORE features the text '4C CORE' in a bold, black, sans-serif font. The letter 'C' is replaced by a large teal circle. A network diagram of smaller teal circles connected by thin lines is centered behind the 'C' and extends to the 'O' and 'R'.

4C CORE

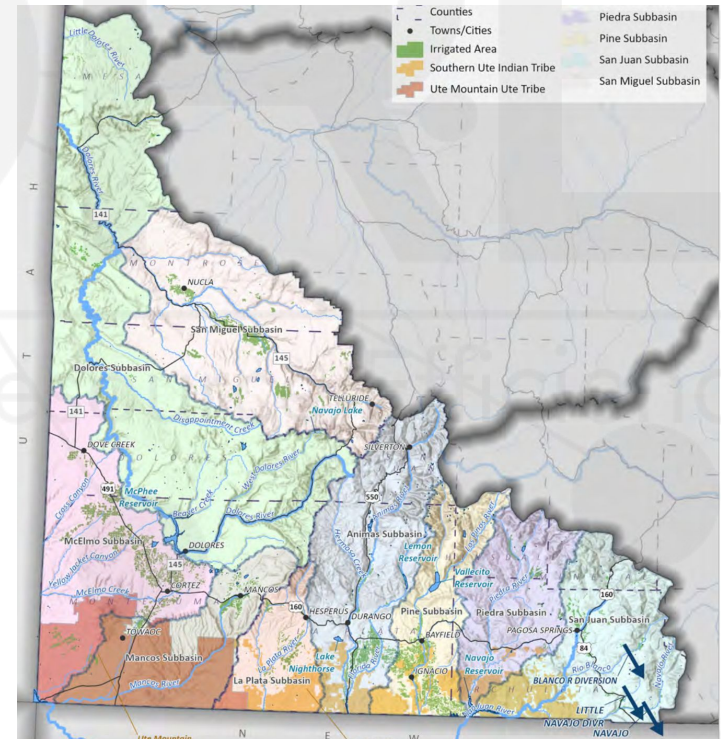
Four Corners Office for Resource Efficiency

La Plata County Graywater Program

Molly Morris, Home H2O Program Manager

Population & Demand

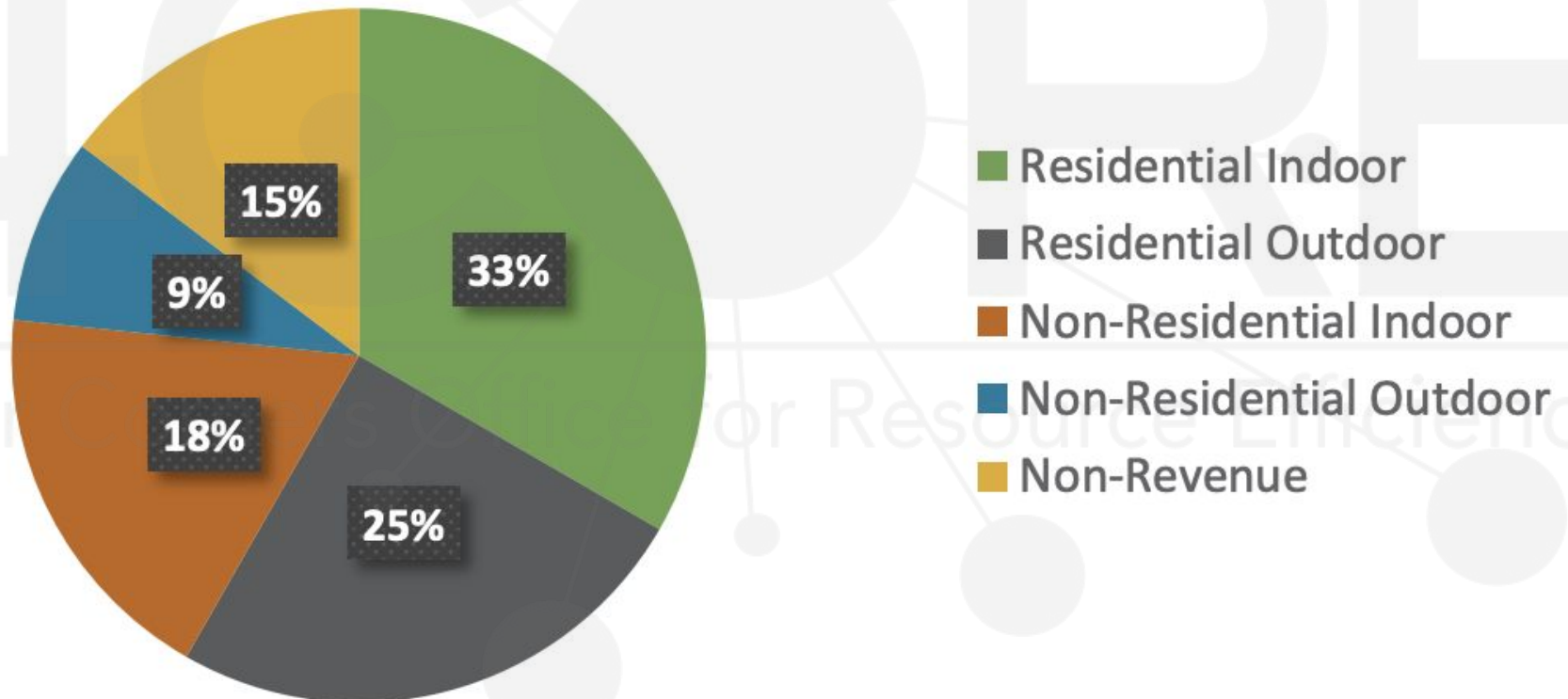
- ❖ The Southwest Basin is projecting the largest percentage increase in population in the state:
 - Currently includes about **2%** of the statewide population.
Projected to grow between **16%-161% between 2015-2050.**
- ❖ Municipal demands are projected to grow from approximately **24,000 AFY in 2015 to between 26,000 and 63,000 AFY in 2050.** La Plata County accounts for nearly half of the baseline demand.
- ❖ Baseline per capita demand
 - Statewide= 164gpcd
 - Southwest Basin= 198gpcd



Data from the 2019 CWP Technical Update Vol. 1, Section 4.9 Southwest Results

Municipal Water Use

Figure 4.9.5 Categories of Water Usage in the Southwest Basin



Data from the 2019 CWP Technical Update Vol. 1, Section 4.9 Southwest Results

Planning and Goals

Southwest Basin



Meet municipal and industrial water needs

STRATEGIES TO MEET GOAL C:

- C1:** Pursue projects to meet the current municipal and future municipal demand.
- C3:** Promote wise and efficient water use through implementation of municipal conservation and efficiency strategies to reduce overall future water needs.

La Plata County



SUSTAINABLE GROWTH

Key Result: La Plata County will actively manage growth focusing on building healthy local economies, using sustainable practices, and protecting the important common values of our residents.

“Carry out water policies that protect this precious, waning resource as the climate is quickly drying in the southwest”

La Plata County Graywater Regulation

- ❖ 4CORE received a Water Plan Grant from Colorado Water Conservation Board (CWCB) to implement a graywater program in La Plata County (LPC)
- Draft the regulation for Laundry to Landscape (L2L) systems in unincorporated LPC to be presented to County Commissioners for approval
- Create Design manual and Operation & Maintenance manual
- Install one pilot project
- Create educational materials



SAN JUAN BASIN
public health

La Plata County
Colorado



Western
Resource
Advocates.

wra

COLORADO

Colorado Water
Conservation Board

Department of Natural Resources

Graywater

❖ **What is Graywater?** Part of the water used in a residential, commercial, or industrial building that may be collected after the first use and put to a second beneficial use (toilet flushing or subsurface irrigation).

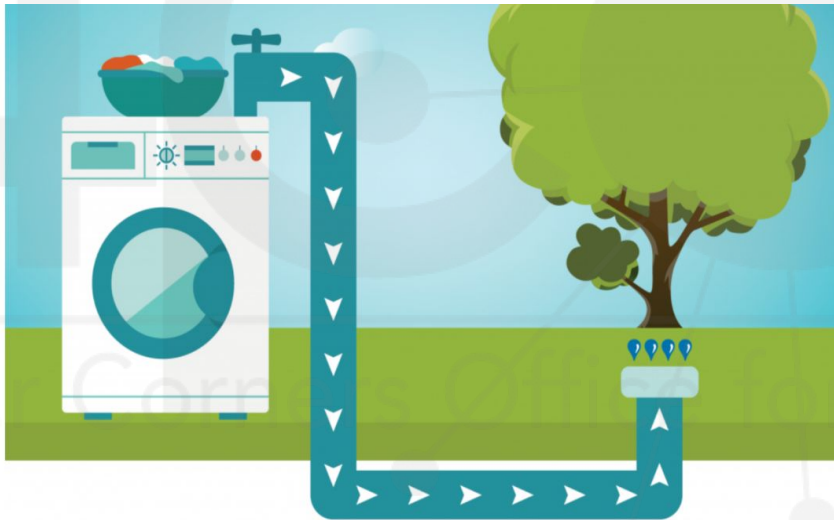
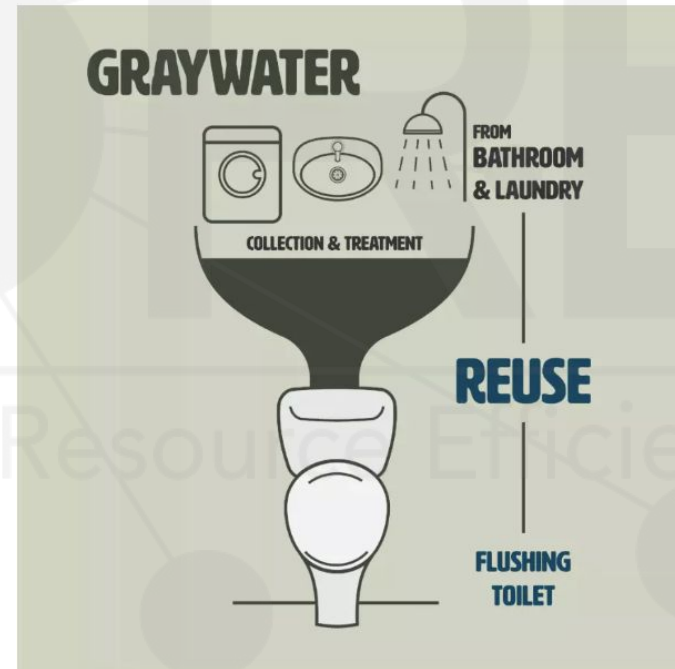


image credit: Pasadena Department of Water and Power



❖ **Does not include:** rainwater harvesting, non-potable reuse or direct potable reuse

Graywater in Colorado

- ❖ Regulation 86 outlines requirements, prohibitions, and standards for graywater use for **non-drinking purposes**. Graywater sources may include water discharged from:
 - ❖ Bathroom & laundry-room sinks
 - ❖ Bathtubs
 - ❖ Showers
 - ❖ **Laundry machines**
- ❖ **Regulation:** Communities must adopt part or all of Reg 86
- ❖ LPC will consider reg for **Laundry to Landscape (L2L) systems**
- ❖ **One of seven CO communities** to adopt Reg 86
- ❖ Water rights- **DWR 2011 Administrative Position** and local rule

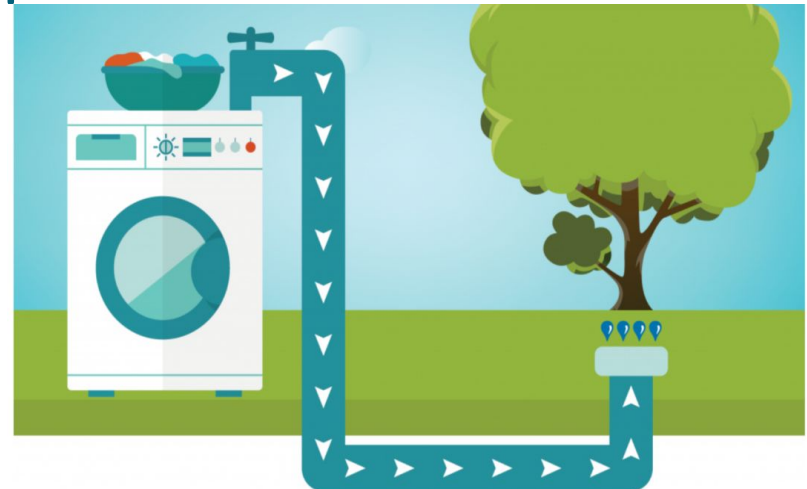
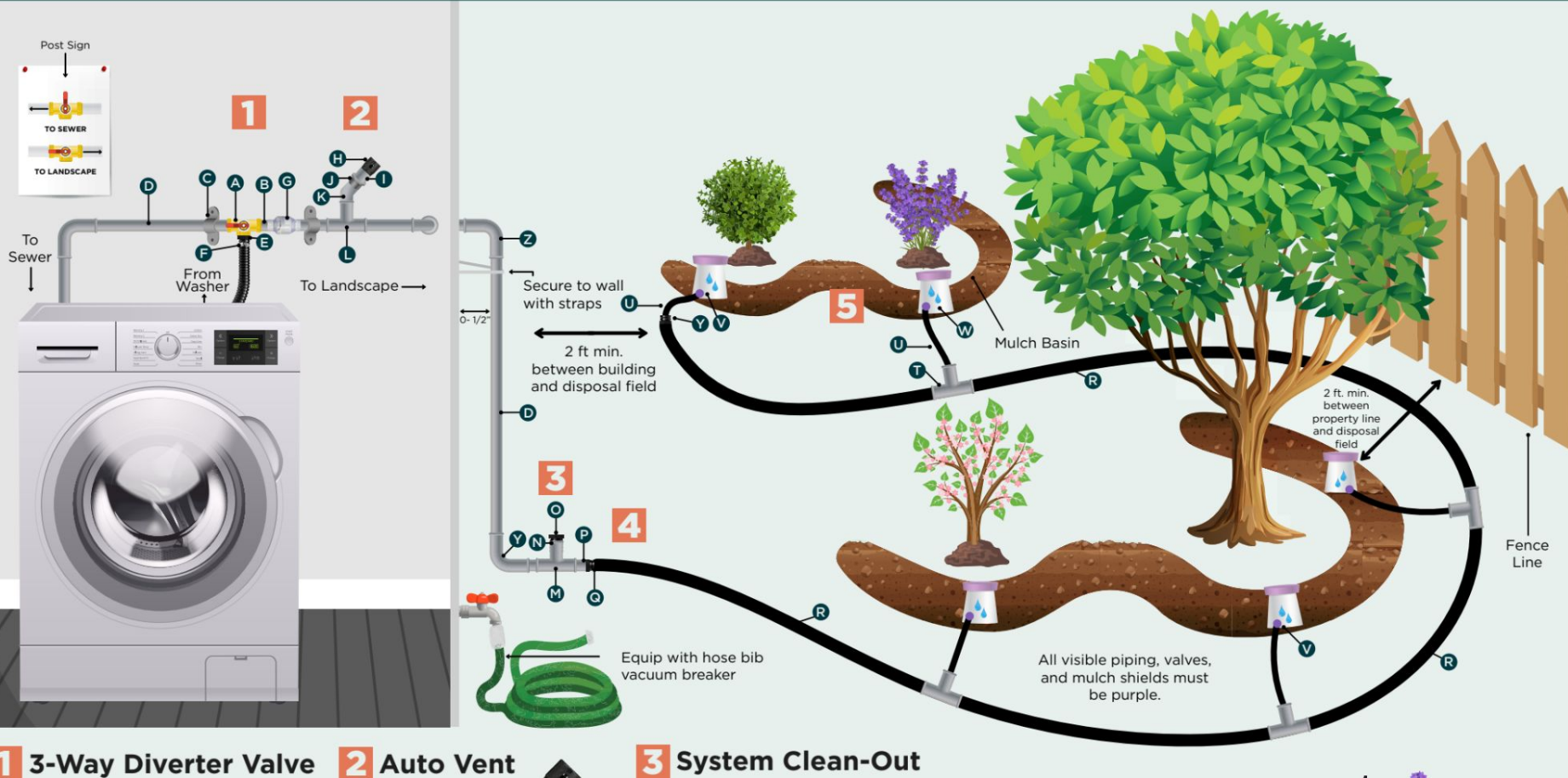


image credit: Pasadena Department of Water and Power

Laundry-to-Landscape Graywater System Schematic



Graphic courtesy of Bernalillo County, New Mexico

4CORE Programs

- ❖ **Zero Emissions Transportation Programs**
 - ❖ Electric vehicle & Charging Station adoption
 - ❖ Ebike programs- Cortez and Ute Mtn Ute Tribe in 2023
- ❖ **Residential and Commercial Energy Efficiency**
 - ❖ CARE
 - ❖ Energy Smart Colorado
- ❖ **Home H2O**
 - ❖ Annual Rain Barrel sale
 - ❖ Laundry to Landscape Graywater
- ❖ **Durango Green Business Certification**
- ❖ **Annual Solar Home Tour & Fundraiser**
- ❖ **Four Corners Carbon Offset Fund**



RAIN BARREL SALE!
\$93 each or 2 for \$180
PICK UP MAY 6TH
9AM-1PM
@ THE LA PLATA COUNTY FAIRGROUNDS

Limited quantity available! Order at:
WWW.RAINBARRELPROGRAM.ORG/4CORE