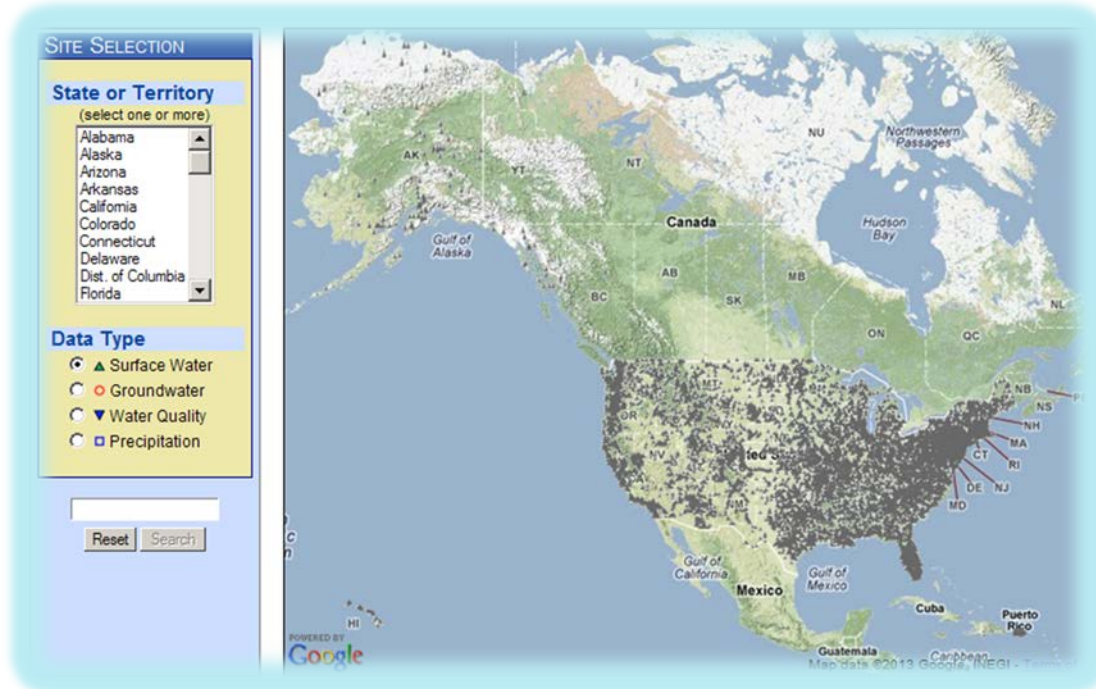


WaterAlert

The U.S. Geological Survey WaterAlert service sends e-mail or text (SMS) messages when parameters exceed user-definable thresholds, as measured by a USGS real-time data-collection station.



<http://water.usgs.gov/wateralert/>

SITE SELECTION

State or Territory
(select one or more)

- Alabama
- Alaska
- Arizona
- Arkansas
- California
- Colorado**
- Connecticut
- Delaware
- Dist. of Columbia
- Florida

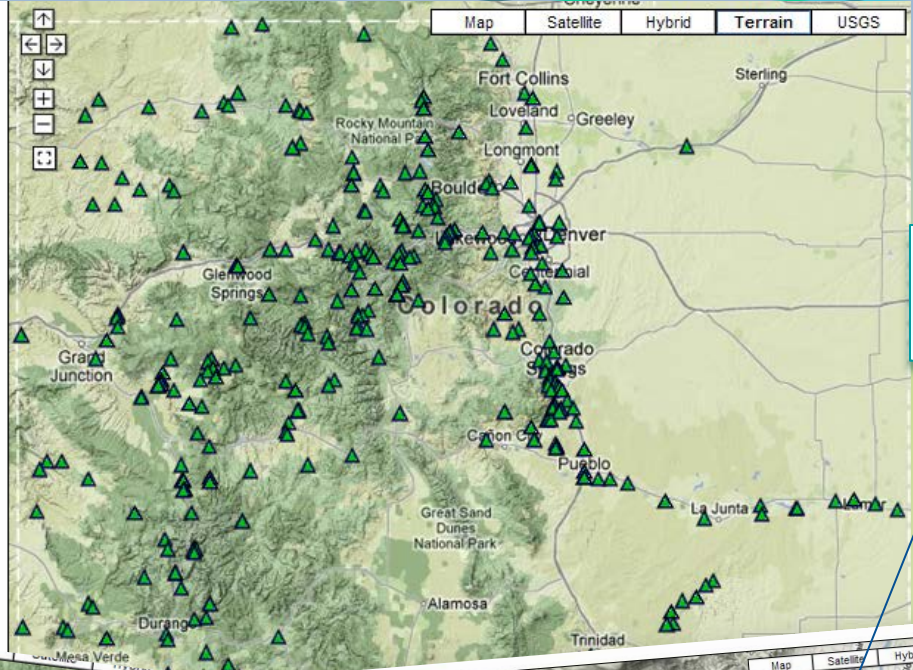
Data Type

- Surface Water
- Groundwater
- Water Quality
- Precipitation

Search this selection

Reset Search

▲ streamflow site



USGS Streamgages

USGS Site Number: 09169500

DOLORES RIVER AT BEDROCK, CO

As of 2013-04-04 14:45:00 MDT

Temperature, water (deg C) = 14.7

Specific cond at 25C (uS/cm) = 819

Subscribe

SITE SELECTION

State or Territory
(select one or more)

- Alabama
- Alaska
- Arizona
- Arkansas
- California
- Colorado**
- Connecticut
- Delaware
- Dist. of Columbia
- Florida

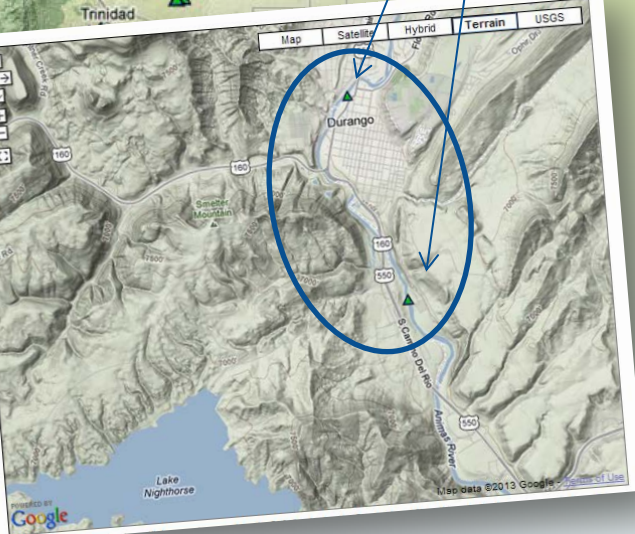
Data Type

- Surface Water
- Groundwater
- Water Quality
- Precipitation

Search this selection

Reset Search

▲ streamflow site



[Instructions](#)

SITE SELECTION

State or Territory
(select one or more)

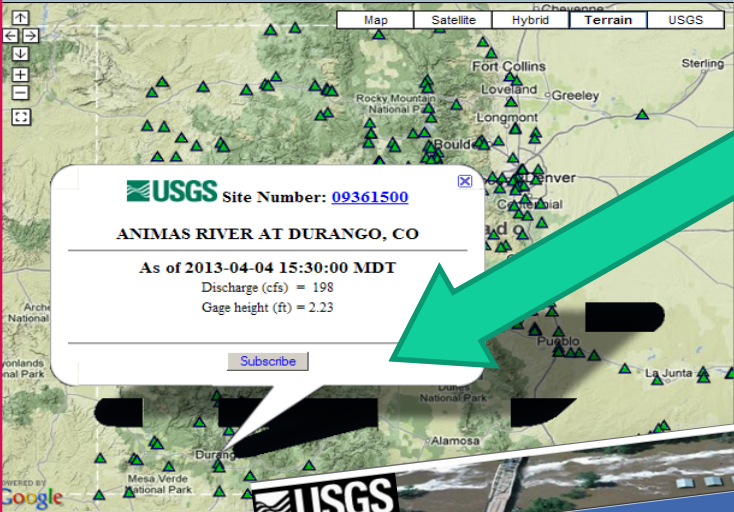
- Alabama
- Alaska
- Arizona
- Arkansas
- California
- Colorado**
- Connecticut
- Delaware
- Dist. of Columbia
- Florida

Data Type

- Surface Water
- Groundwater
- Water Quality
- Precipitation

Search this selection

- streamflow site



Click Subscribe

Thank you. Your form has been submitted (ID=c4KFb).

A confirmation message has been sent to jldansie@usgs.gov.

You must reply to the confirmation message before Saturday, April 06, 2013 4:48:35 PM in order to activate this subscription.

USGS Real-Time Hydrologic Notification System subscription for:

Site number: 09361500
 Site name: ANIMAS RIVER AT DURANGO, CO
 Notification Method (e): email message to jldansie@usgs.gov
 Parameter Code: 00060
 Parameter Name: Discharge (cfs)
 Notification interval: Daily
 Threshold condition: value < 198

Check your "Spam" mail folder if you don't receive a confirmation email from the USGS within a few minutes

Subscription Form

The U.S. Geological Survey WaterAlert service sends e-mail or text (SMS) messages when certain parameters, as measured by a USGS real-time data-collection station, exceed user-definable thresholds. The development and maintenance of the WaterAlert system is supported by the USGS and its partners, including numerous federal, state, and local agencies.

Real-time data from USGS gages are transmitted via satellite or other telemetry to USGS offices at various intervals; in most cases, once every 1 or 4 hours. Emergency transmissions, such as during floods, may be more frequent. *Notifications will be based on the data received at these site-dependent intervals.*

Site Info:
 Site Number: 09361500
 Site Name: ANIMAS RIVER AT DURANGO, CO
 Agency: USGS
 Transaction ID: c4KFb

Send Notification To:
 My mobile phone
 My email address

Notification Frequency:
 Hourly
 Daily

Streamflow Data-type Parameter:
 Discharge, (cfs)
 Gage height, (ft)

Threshold Condition:
 Greater than (>)
 Less than (<)
 Outside a range (< or >)
 Inside a range (> and <)

Recent value:
 198 [peak chart]
 2.23 [peak chart] | [View flood stage = 0](#)

Real-time value is less than: [200] cfs

I have read and acknowledge the [Provisional Data Statement](#) and [Disclaimer](#).

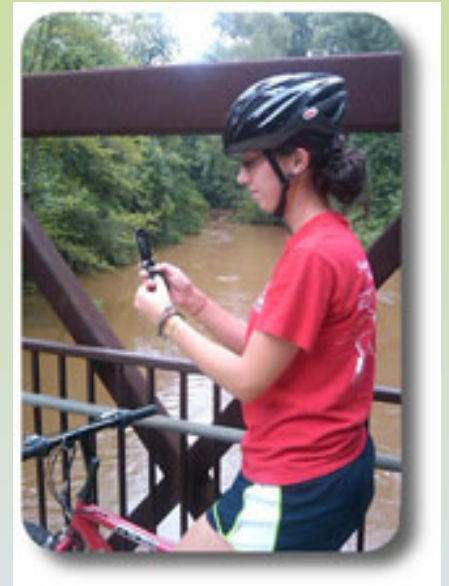
*Email address is required for a one-time confirmation. Shortly after you submit this form, you will receive an email to which you must reply, without altering, in order to activate this SMS subscription.

WaterNow

On-demand, current-conditions for water data directly to your mobile phone or email

1.) **The USGS Site Number-** This is a unique number that identifies a USGS gage or well site where you want to obtain data.

2.) **The parameter code (optional)-** This is needed if you want other data besides flow and and/or stage. For example, Water Quality data collected at a site.



<http://water.usgs.gov/waternow/>

WaterNow

Some commonly available parameters:

Streams, Springs	00060 Flow, ft ³ /s 00065 Stage, ft
Wells	72019 Depth to water level, ft 72020 Water level elevation, ft NVGD 62611 Water level elevation, ft NAVD
Lakes	00065 Stage, ft 72020 Water level elevation, ft NVGD
Water quality	00010 Water temperature, °C 00095 Specific conductance, µS/cm 00300 Dissolved oxygen, mg/l 00400 pH

Site # * Gives you data for all parameters at a site.

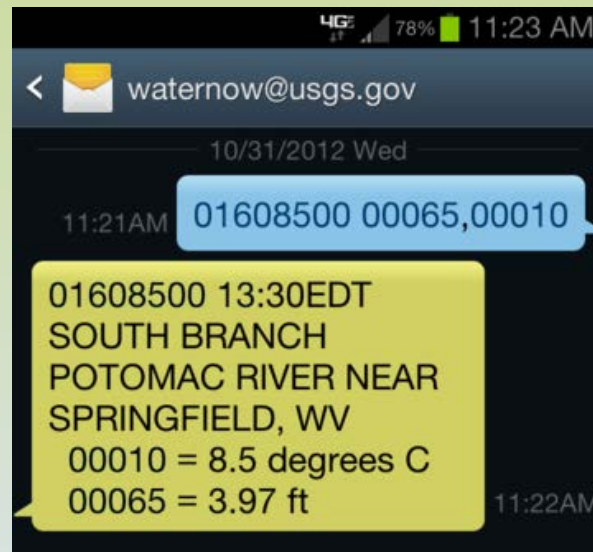
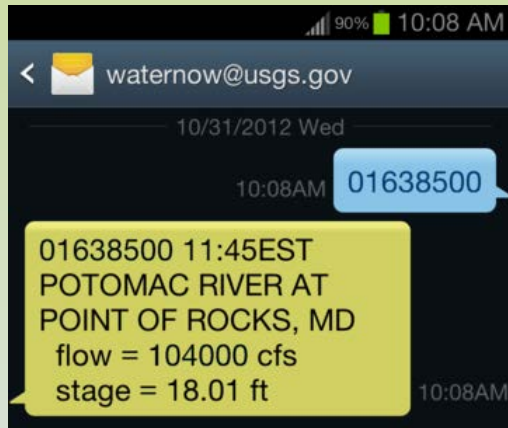
<http://water.usgs.gov/waternow/>

WaterNow

How to use WaterNow

- **Text Message (SMS) or Email**

Send message to WaterNow@usgs.gov containing the USGS Site number of the gage you want to query (optionally add parameter codes to customize your query). You will receive a response within a few minutes.



<http://water.usgs.gov/waternow/>

**GET OUT AND ENJOY
YOUR WATERWAYS!**

Questions?